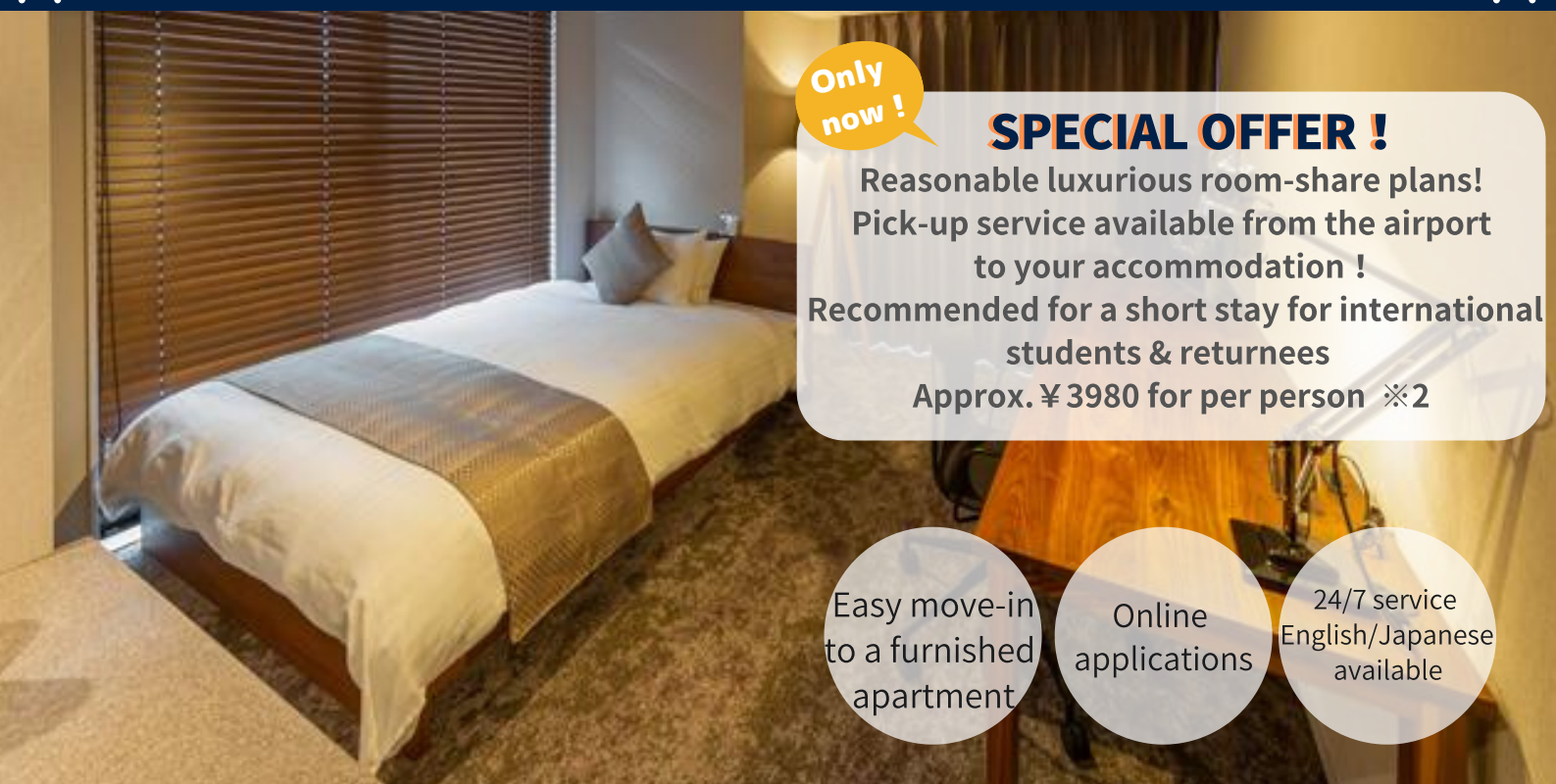


Limited time offer for December! Campaign for sharing a luxury room !



Only now !

SPECIAL OFFER !

Reasonable luxurious room-share plans!
Pick-up service available from the airport
to your accommodation !
Recommended for a short stay for international
students & returnees
Approx. ¥ 3980 for per person ※2

Easy move-in
to a furnished
apartment

Online
applications

24/7 service
English/Japanese
available

※ Tokyo Port City Takeshiba (Room type-C)

20% discount for the 1st month

Stay in a convenient, luxurious room
for a reasonable price!

Luxurious room-share plans for a
temporary stay for exchange students
and families returning from abroad.



Free starter kit!

2-3 days supply of detergent,
shampoo, hair conditioner,
toilet paper etc. included

Example prices

	C-D type Example for 3 people	
	Regular price	20% off
Monthly rent	¥390,000	¥312,000
House cleaning fee(tax included)	¥33,000	¥33,000
Housekeeping fee(tax included)	¥1,100	¥1,100
Guarantee fee (3.5%)※Only for individual contract	※1 ¥14,844	¥12,114
Total amount	¥438,944	¥358,214
Per person Daily rent(Approx.)	¥ 4,877	¥ 3,980

※1 Guarantee fee unnecessary for corporate contracts.

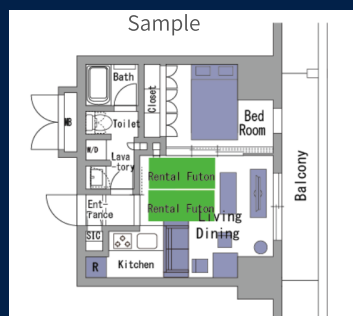
※2 One month minimum contract.

※ Daily rent (standard) : initial cost divided by the number of people staying in the room divided by 30 days.

※ Credit card payment necessary through designated guarantor company.

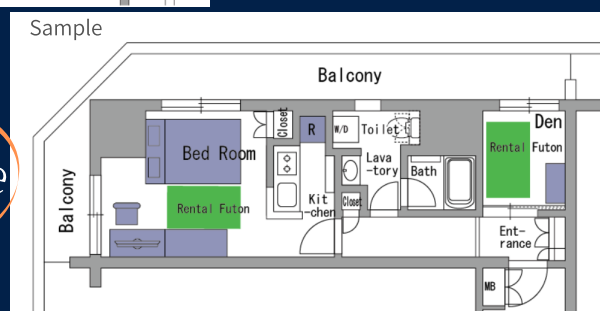


※ Tokyo Port City Takeshiba (Room type-D)



D-type
37.37m²

C-Type
37.24m²



Enplus Inc.

Nomura Bldg. 2F 4-8 Yonbancho, Chiyoda-ku, Tokyo

Contact

TEL:03-4455-7595 (Minami, Kobayashi)

Email: mondestay-ex@enplus.co.jp

Limited applications until
the end of December!

SPECIAL OFFER!

Reasonable luxurious room-share plan !

Bedding(futon)set up to 2 people for free!
4 people maximum,
from ¥3,980/person per day!



Airport pick-up service available!

Pick-up service from airport to your accommodation!

※ If you book our room, arrangement fee is free, but the below fare will be charged.

FARE: Narita to Tokyo: ¥ 40,000 approx. (tax included)

Haneda to Tokyo: ¥ 26,500 approx.(tax included)

(fare could change depending on the destination)

Sales Campaign Properties

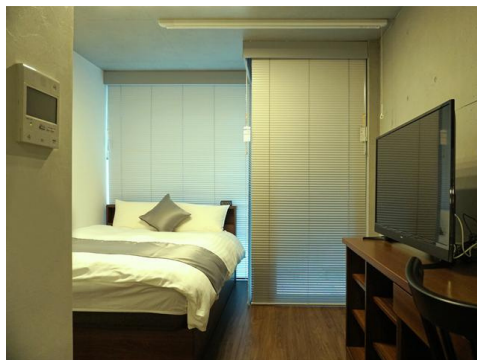
Tokyo Port City Takeshiba

1 min. walk from Takeshiba Sta.



Plan House Tokyo Kanda

1 min. walk from Kanda Sta.



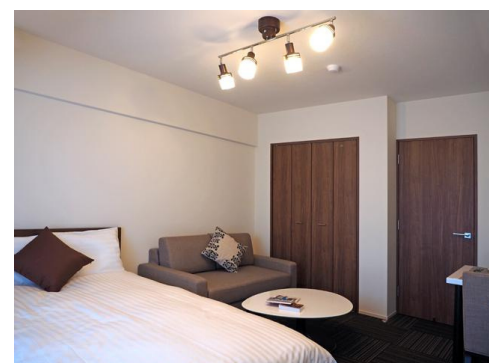
APA SERVICED RESIDENCE SHINJUKU

1 min. walk from Higashi Shinjuku Sta.



Mondestay Tokyo Kanda

1 min. walk from Kanda Sta.



Shibuya CAST

3 min. walk from Shibuya Sta.



※ 2 Limited Offer for Takeshiba

Offer 1 : Free entry to Sky View Bath in Hotel Azur Takeshiba Tokyo

※Limited to one person per entry.

※Available after the 14 days of quarantine.

Offer2 : Free use of gym & billiards!

※Payment is required if the billiard table is rented out.



Enplus Inc.

Nomura Bldg. 2F, 4-8 Yonbancho, Chiyoda-ku, Tokyo

Inquiries

TEL:03-4455-7595 (Minami, Kobayashi)

Email: mondestay-ex@enplus.co.jp